

1.Panel functional annotation

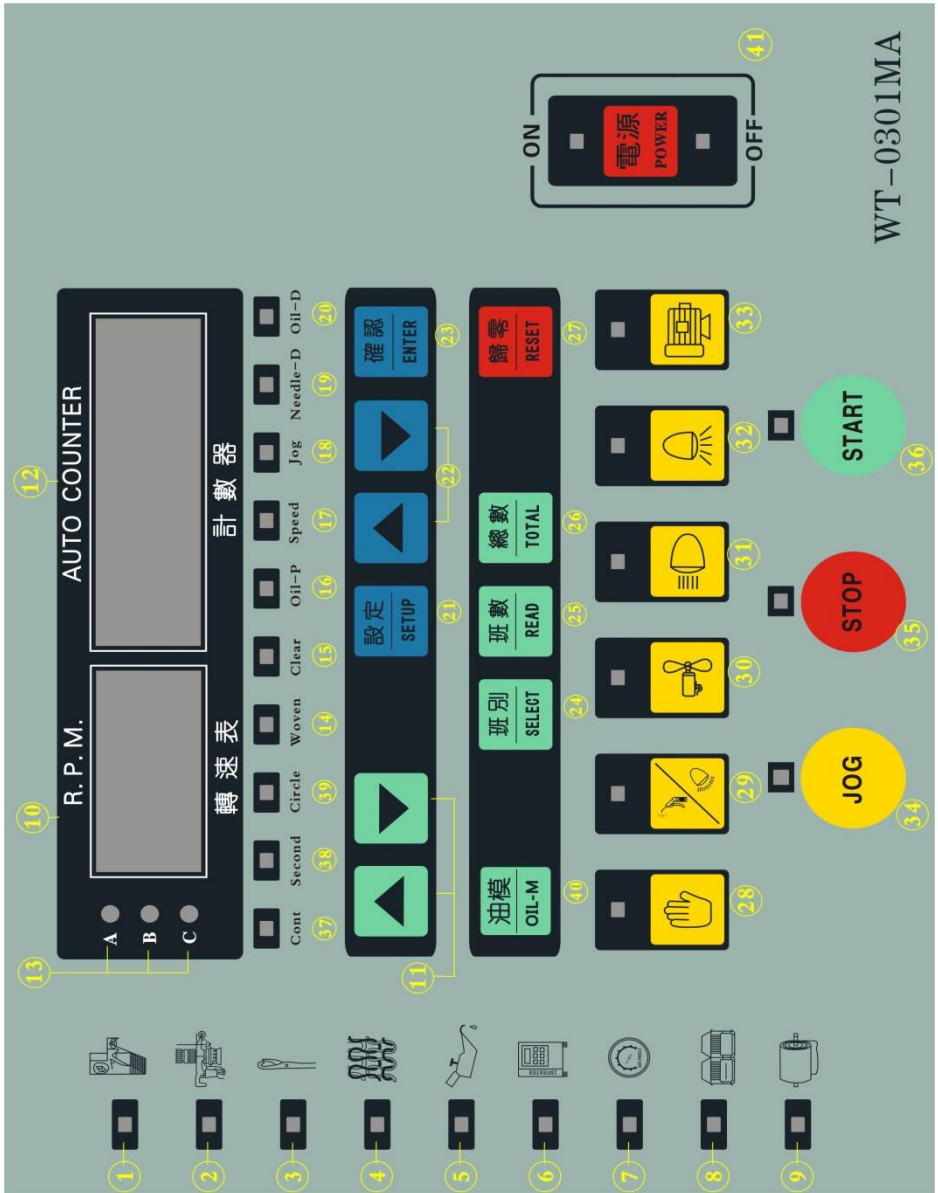


Figure1: WT-0301MA Control Panel functions to indicate

- | | |
|--|--|
| 1. Off in the on the paragraph yarn indicator | 22. Settings to increase or decrease in adjustment key |
| 2. Middle of the broken yarn indicator | 23. Set to confirm key |
| 3. Probe abnormal indicator | 24. Class selection key |
| 4. Rag indicator | 25. Current frequency count display |
| 5. Short of oil indicator | 26. Total number of display keys |
| 6. Less pressure indicator | 27. Run value cleared key |
| 7. The drive fault indicator | 28. Force control keys |
| 8. Security door open indicator | 29. Clear car/weaving conversion key |
| 9. Outside the load short-circuit indicator | 30. Fan control key |
| 10. Speed information is digital table | 31. According to cloth light control keys |
| 11. Engine speed to increase or decrease the adjustment button | 32. Lighting control keys |
| 12. Run to set the state value the number of table | 33. Inverter power supply control key |
| 13. A / B / C class indicator | 34. Jog control keys |
| 14. Weaving work light | 35. And shutdown control key |
| 15. Clear car indicator | 36. Start the control key |
| 16. Pump operating light | 37. Pumps continuous work mode indicator |
| 17. Speed limit indicator | 38. Pump seconds intermittent |

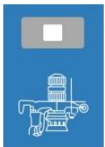
18 Jog and slow light	operating mode indicator
19.Broken Needle semaphores drive voltage allows	39. Pump ring burst mode indicator
20.Lack of oil and signal lamp drive voltage allows	40.Pump operating mode selection key
21. Set key	41. Power key

2. Control panel features detailed

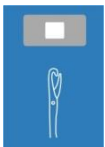
1. External exception indicates that



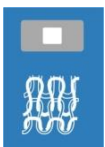
1. Off in the previous paragraph yarn indicator: LED indicator flashes when the upper section off yarn, **The machine will automatically stop**. The red light blinks in the three-color indicator of the machine on stage.



2.The following paragraph off yarn indicator: LED indicator flashes when the current segment off yarn, **The machine will automatically stop**.This yellow light flashes in the three-color indicator of the machine on stage.



3. **Probe abnormal indicator** When the probe exception, LED that flashes, **The machine will automatically stop**. When probe exception restored, must be an unusually LED, the signal will be cleared.



4. **Rag indicator:** When the machine detects the cloth has a hole, the LED indicator flashes, **The machine will automatically stop**.



5. AIR abnormal indicator: LED indicator flashes when the air compressor exception, **The machine will automatically stop.**



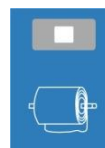
6. Oil abnormal indicator: LED indicator flashes when the injection machine, there is no oil,, **The machine will automatically stop.**



7. Security doors exception indicator: When the security door is not closed, the LED indicator flashes, **The machine will automatically stop.**Then according to the cloth lamp lit



8. Inverter abnormal indicator: When the inverter abnormal, the LED indicator flashes, **The machine will automatically stop,** And will automatically cut off the inverter powe.



9. Winding Indicator: When the counter reaches the set value, the LED indicator flashes, **The machine will automatically stop.**The green light flashes in the three–color indicator of the machine on stage.

※ The counter displays the H and set the number at this time may open slow;

※ To clear this status, press the ZERO key to zero the counter can only.



2. Set the key part of



1.select: Counter displays zero, you can replace the A spot, Class B or Class C Class indicator. Each class can be individually set the count value can also view the cumulative value.

設定
SETUP

2.Setup: Can view the settings or change the settings.



※Pressed, the counter displays the current settings.

※If you want to change, simply press into the target value, and then press this button.



※Not want to change, simply press the zero key to exit the setting screen.

讀出
READ

3.READ: Press and hold to view the classes cumulative, Release to exit ※Right, said the Class A cumulative 66 000

circle.

※If you want to zero, as long as you can press and hold the READ and RESET.



總數
TOTAL

4.TOTAL: Hold can view the total cumulative value of the Class A + B class + Class C, Release to exit.

※The following figure shows the cumulative total is 1.366 million circle

※If you want to zero, as long as you can press and hold the READ and RESET.



5. RESET: Digital display on the counter to zero or exit setup screen.

6. Speed key: ※ Setting the running speed: Press the up or down arrow operation to acceleration and deceleration. You can see the display change.



7 Set the jog speed: Press the JOG and hold, press the "▲" or "▼" button you can change the jog speed.

3. Machine operators:



1. POWER: Click open and then click off, the corresponding LED lights up.



2.START: This button is pressed, LED will light up, the machine starts running. If the machine does not start, for the following reasons:

- ※Fails, you can see part of the fault indicator not flash.
- ※the inverter power is not connected to, view the inverter power switch LED is lit.
- ※Counter set value is not zero.
- ※The counter is displayed in the set state or forced the OPEN state.
- ※The machine speed setting value is not zero.



3 STOP: The machine stops. Machine operation, the LED is not lit, the machine stops, the LED flashing.



4. JOG: Hold, LED lights up, Machine slow operation. If the machine does not move and the LED does not light the reasons for:

- ※Fails, you can see part of the fault indicator not flash.
- ※the inverter power is not connected to. To view the inverter power switch LED is lit.
- ※The counter is displayed in the set state or forced the OPEN state.
- ※JOG speed setting value is zero.



5 Inverter power switch: Press this button, LED light to indicate power. LED is not lit, indicating that shutdown.



6. Above to see the fabric light switch: Press this button, LED lights, said lights.LED is not lit, said the lights.



7. To see the cloth light switch: Press this button, LED lights, said lights.LED is not lit, said the lights.



8. Fan power switch: Press this button, LED light to indicate power.LED is not lit, indicating that shutdown.

※When the inverter power is turned on, the fan must be running in the machine three times before rotation.

※When the drive power supply is turned off, press this button, the fan is running, you can do cleanup work.



9. Forced to switch: Press this button, LED light (OPEN1) or flashing (OPEN2),Broken yarn failure, the controller will automatically enter a forced state, counter displays the OPEN1 or OPEN2 words, only open climbing to do to change the yarn.

※ display OPEN1 off Shadeng not light.

※The display OPEN2 off Shadeng will light.



10. **Parameter settings:** Set in the stop mode, press and about 10 seconds to enter setting state。 In setting state display window

shows the parameter function No.

Press "▲" or "▼" button to modify the function value.

Each time the key value changes, Until you want to set the parameters, (Parameters such as



Table 2) Setup is complete press the Enter key to save.

Attention!The controller is installed in the machine for the first time power on, be sure to pay attention to see if the parameters are set, if the parameter is not set good will cause the machine not functioning properly, or even cause damage to machine. After the parameter setting is necessary to press the Enter key to save the future you want to modify will change.

Table 2

Parameter number	Function	Setting range	Default values
1	To fuel injection pump in the jog	ON— Fuel injection OFF — Not fuel injection	OFF
2	Probe whether the failure automatic recovery	ON- Automatic recovery, OFF- Need to press the "STOP" to restore	ON
3	Clean car / vehicle has warmed up the choice of	ON- The Qing car mode OFF- Warm up mode	ON
4	Jog mode	ON- Jog individually controlled OFF- Ordinary	OFF
5	Level of the sensor input to select	L0- Low enter a valid High enter a valid	L0
6	Fan delay to start the number of turns	0~99(Circle)	2
7	Counter reaches a set value set before the deceleration of the ring number	0~99(Circle)	3
8	Vehicles clear / warm up laps	0~99(Circle)	0
9	Jog speed	0~60(HZ)	15

Circular knitting microcomputer controller manual

10	Normal speed	0~60 (HZ)	30
11	Maximum speed limit	0~99 (R / min)	90
12	Yarn break reaction time	0~999 (Millisecond)	0
13	Oil mode selection	0~2	0
14-1	└ Oil-mode sec intermittent work the number of seconds	0~99 (Second)	60
	└ Oil mold seconds intermittently stop the number of seconds	0~999 (Second)	20
14-2	└ Oil mold circle intermittent circle	0~99 (Circle)	20
	└ Oil-mode ring intermittently stop ring	0~999 (Circle)	10
15	Needle drive signal lights	ON— Output OFF— Not output	ON
16	the oil drive signal lights	ON— Output OFF— Not output	ON
17	Show stop code	ON	OFF
18	Speed delay tick	0~999 (MS)	10
19	Speed up step	0~99	1
20	Speed down step	0~99	1

Counter display window shows the current function value of the number.



班別
SELECT

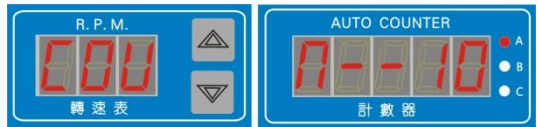
Press the SELECT button to change ON or OFF, Each time you press a "▲" "▼" button, the value will change once, Continuous change 10 times, the system automatically changes the original speed of 10! Can be quickly modified.

Value set to ENTER To confirm the modified parameters , And automatically change to the next function number.Completion of the revised press the SETUP key, Complete the changes, press the SETUP button more than 2 seconds to save and exit the setup.



11.Warm up laps setting: Press to LED lights, Said setting the state of the warm up laps.Counter is shown below in Figure COUN and numbers

You can enter 0 to 9999 slow laps.At the next power, the machine will jog speed operation until the set number of laps, Be able to restore normal speed, This feature is designed for the boreal regions, This feature allows the machine to warm up, do not use, set to zero or to restore function for clear car. LED is not lit, that exit the setting.

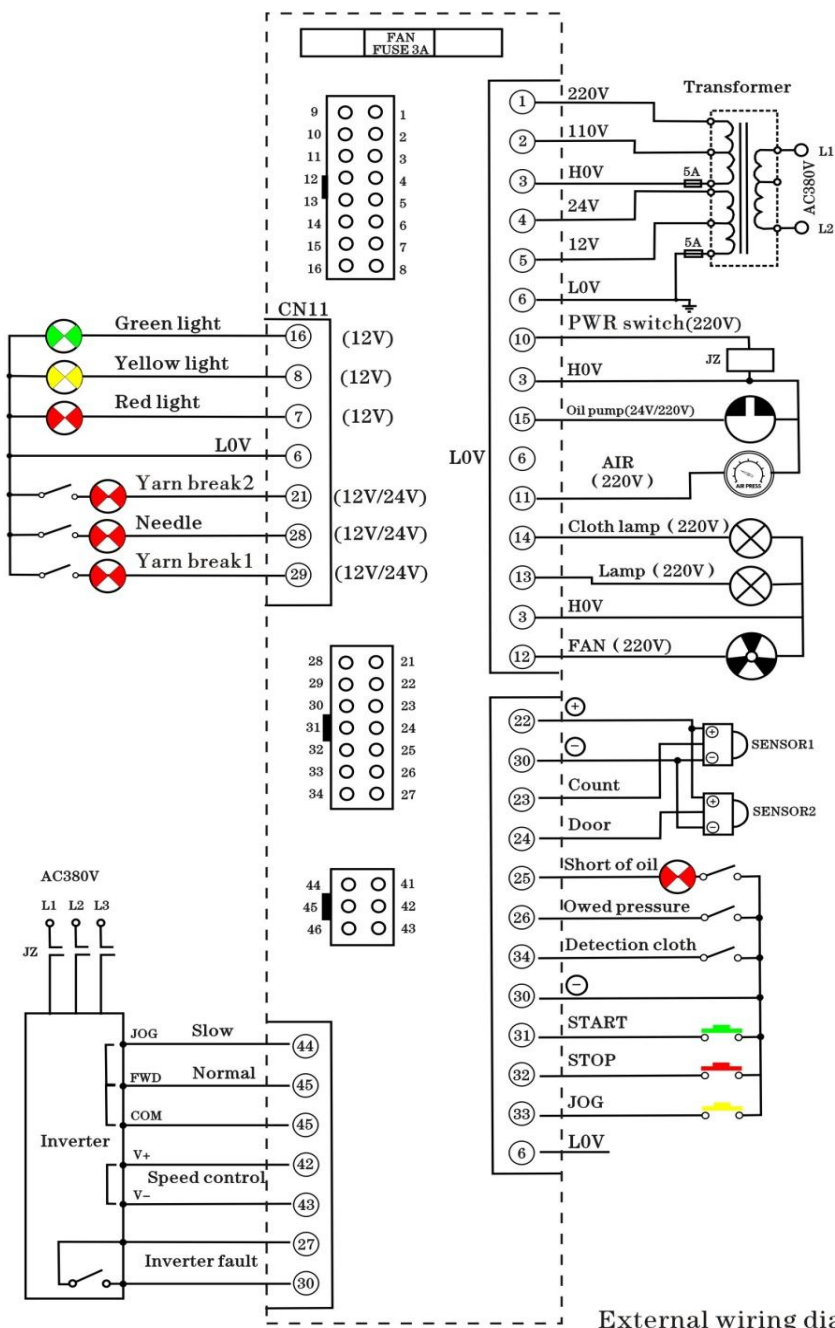


12.Clear vehicle functions: When this button is pressed, the LED light, clear vehicle state. Counter displays the CLE and code, Enter 0 to 99 the countdown clear car laps. LED light to turn off

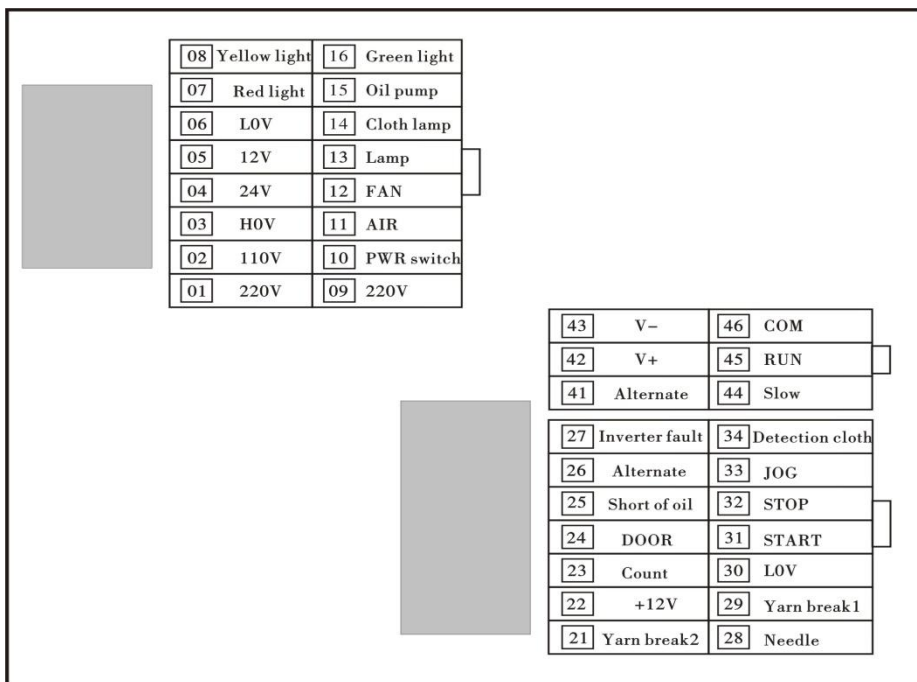
this feature.



3. External wiring diagram (Figure 2.)



4. Back cover of the wiring plug use (Figure 3)



Tip: Unified Numbering of the wiring of the product for the same line, this controller on the back of the terminal number and number installed in the base distribution box terminal board.